

## Creating a Tool File Using 5-Point Calibration & Auto Weight Function

### Introduction

A good tool file ensures path accuracy & longevity of the robot. This document will review the procedure for creating a good tool file definition using 5-Point Calibration and automatically calculating tool weight.



### Requirements

- Safety Mode if system has FSU. If not, Management Mode
- S2C431=1 for multi tool

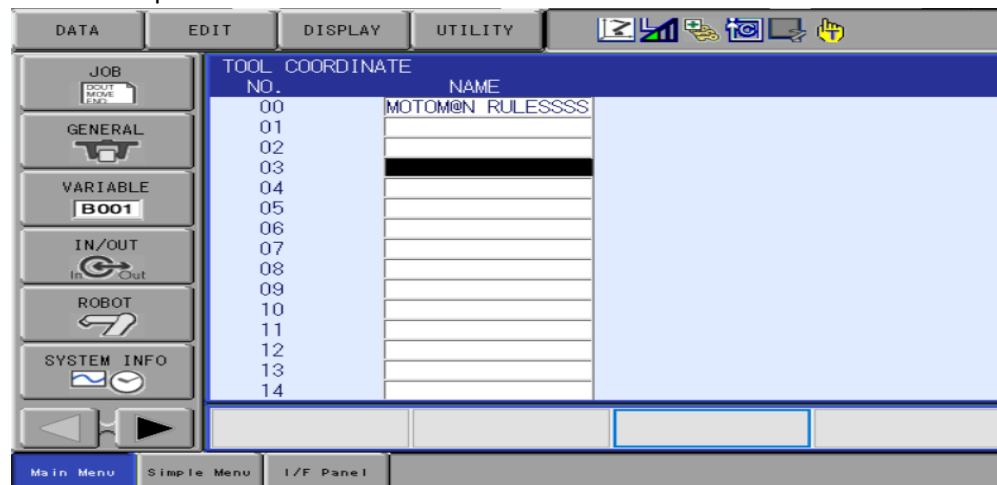
This document captures ideas, experiences, and informal recommendations from the Yaskawa Partner Support team. It is meant to augment – not supersede manuals or documentation from motoman.com. Please contact the Partner Support team at [partnersupport@motoman.com](mailto:partnersupport@motoman.com) for updates or clarification.

## Procedure

1. Navigate to the TOOL screen.

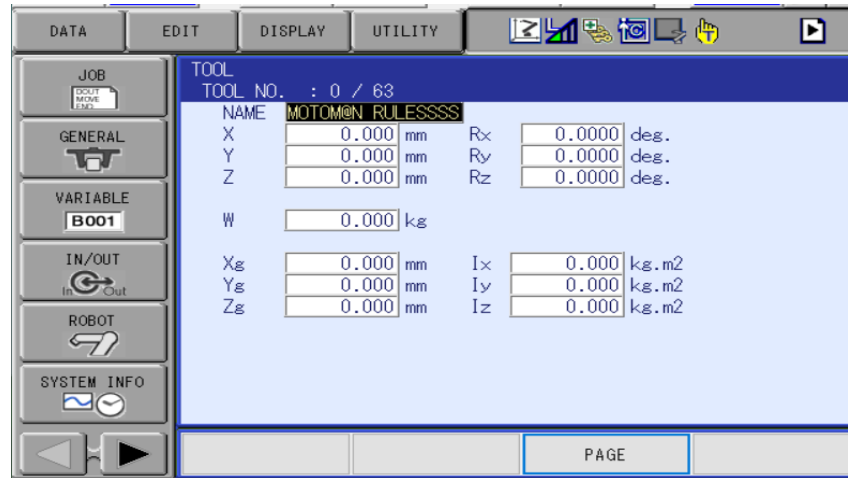


2. Select the tool number you want to use. Up to 64 tools are available.

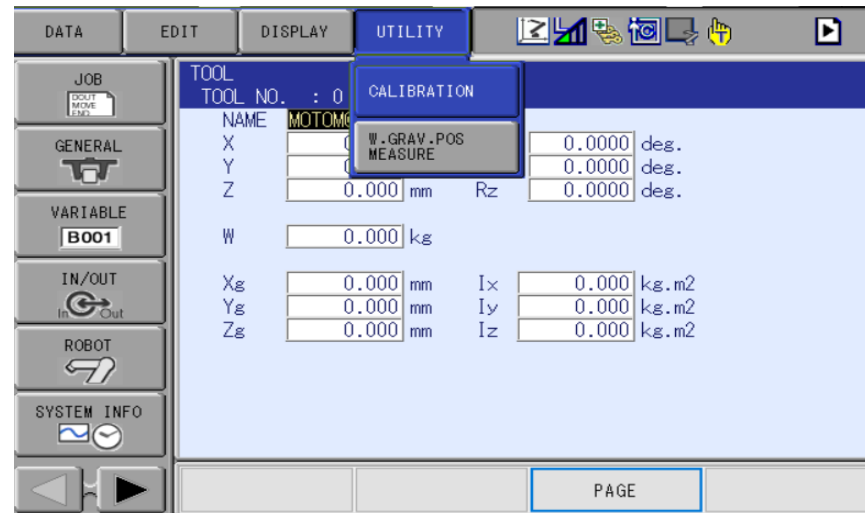


This document captures ideas, experiences, and informal recommendations from the Yaskawa Partner Support team. It is meant to augment – not supersede manuals or documentation from motoman.com. Please contact the Partner Support team at [partnersupport@motoman.com](mailto:partnersupport@motoman.com) for updates or clarification.

3. Tool File values should be all zeros before starting. After performing the 5-point calibration the X, Y, Z values will auto populate.

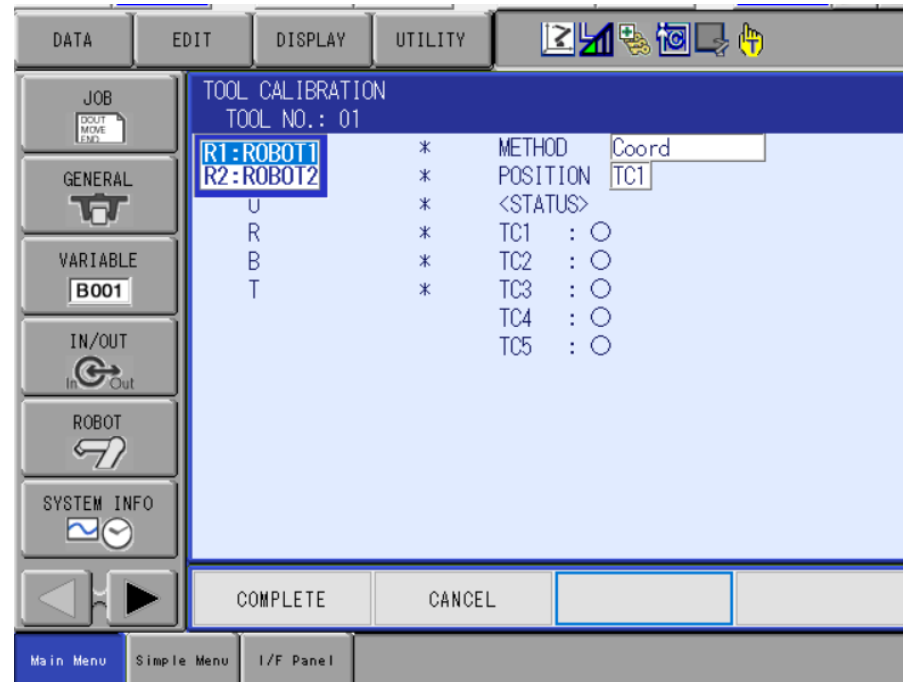


4. Select "UTILITY" then "CALIBRATION" buttons.



This document captures ideas, experiences, and informal recommendations from the Yaskawa Partner Support team. It is meant to augment – not supersede manuals or documentation from motoman.com. Please contact the Partner Support team at [partnersupport@motoman.com](mailto:partnersupport@motoman.com) for updates or clarification.

5. Next, select which robot you want to perform tool calibration on.



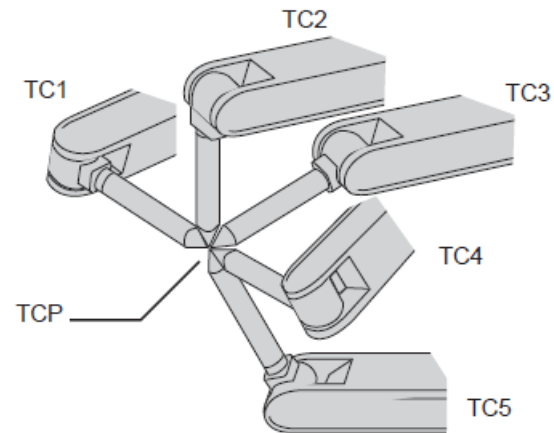
6. Select Method

- “Coord” calibrates only the coordinates
- “Posture” calibrates only the posture
- “Coord+Posture” calibrates coordinates plus posture

This document captures ideas, experiences, and informal recommendations from the Yaskawa Partner Support team. It is meant to augment – not supersede manuals or documentation from motoman.com. Please contact the Partner Support team at [partnersupport@motoman.com](mailto:partnersupport@motoman.com) for updates or clarification.

## 7. NOTES:

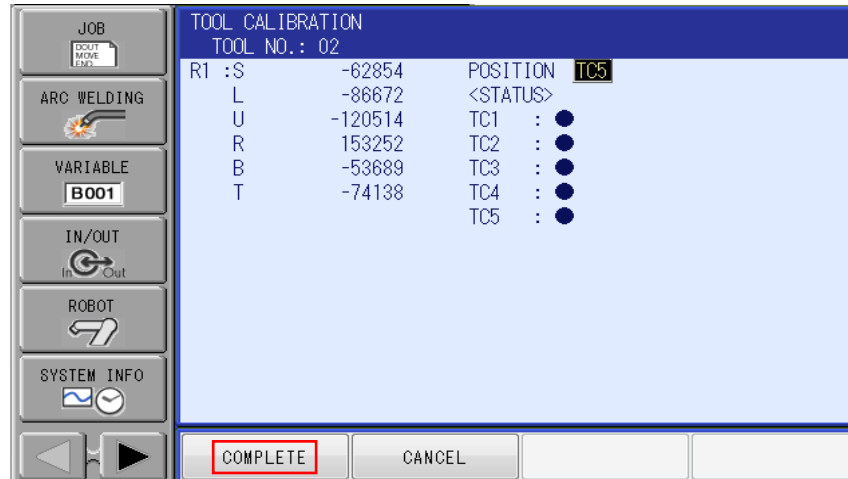
- When performing the 5-point calibration maintain servos through the teaching process.
- To record a point press MODIFY ENTER.
- Make sure when recording TC# the appropriate one is selected.



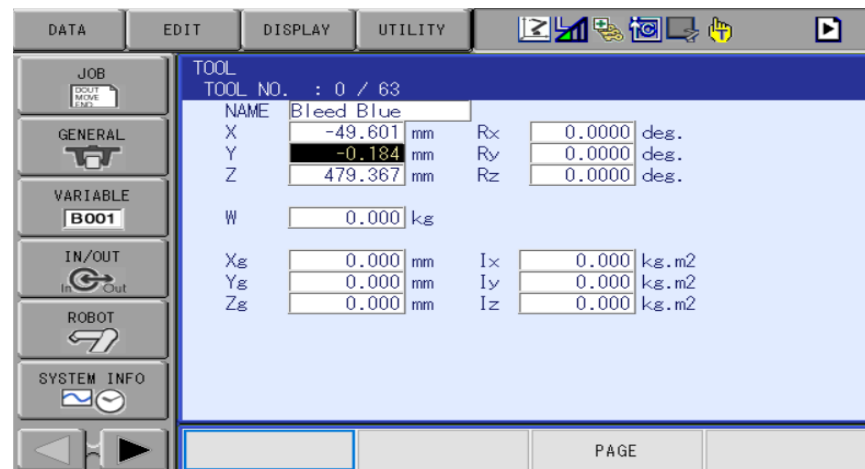
7.1 Record points TC1-TC5, the posture of robot should change between points but must maintain same location on the pointer.

This document captures ideas, experiences, and informal recommendations from the Yaskawa Partner Support team. It is meant to augment – not supersede manuals or documentation from motoman.com. Please contact the Partner Support team at [partnersupport@motoman.com](mailto:partnersupport@motoman.com) for updates or clarification.

8. Once points TC1-TC5 have been recorded, select “Complete”.

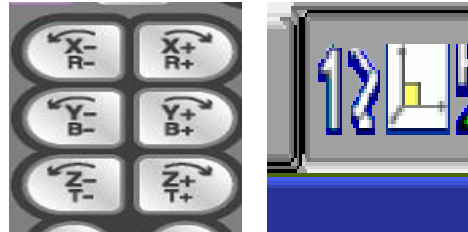


9. Verify that X, Y, Z has populated with data. If the system has the FSU feature, you will have to do a Functional Safety Reset in Maintenance mode.

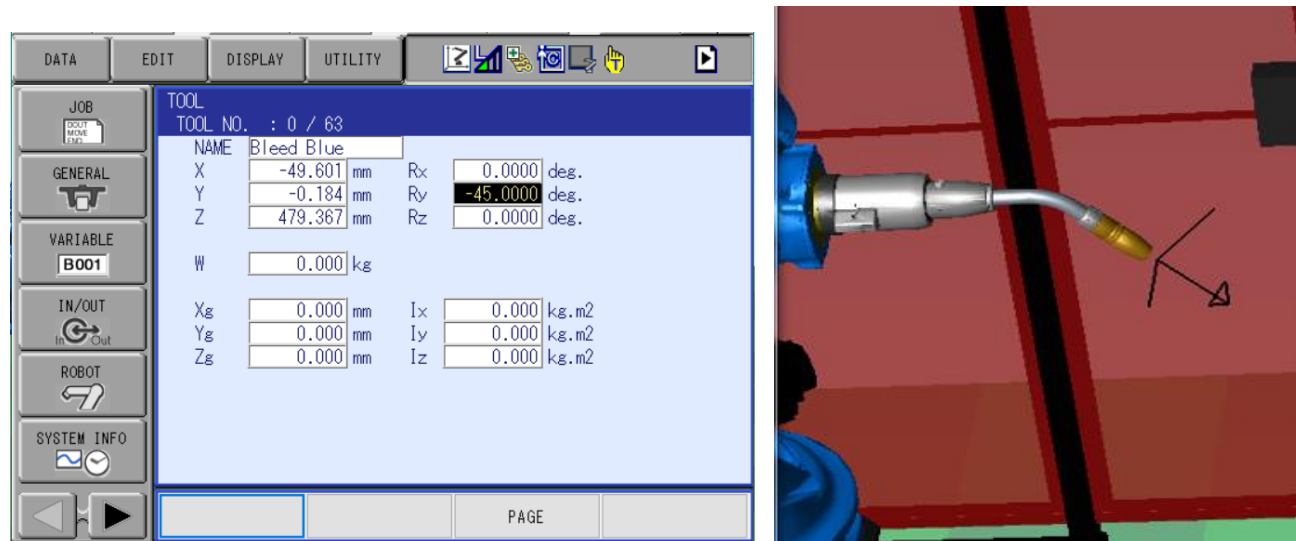


This document captures ideas, experiences, and informal recommendations from the Yaskawa Partner Support team. It is meant to augment – not supersede manuals or documentation from motoman.com. Please contact the Partner Support team at [partnersupport@motoman.com](mailto:partnersupport@motoman.com) for updates or clarification.

10. Using the roll about keys and robot frame coordinate, make sure that the robot rolls about a known location with minimal drift.



11. Lastly enter the correct values into RX, RY, RZ to change the tool's angle of orientation in relation to the operation of tool frame.



This document captures ideas, experiences, and informal recommendations from the Yaskawa Partner Support team. It is meant to augment – not supersede manuals or documentation from motoman.com. Please contact the Partner Support team at [partnersupport@motoman.com](mailto:partnersupport@motoman.com) for updates or clarification.

12. When performing the auto weight calibration, it populates 2 things:

- Weight of the tool (W)
- Center of gravity/mass (Xg, Yg, Zg).

W	<input type="text" value="0.000"/>	kg
Xg	<input type="text" value="0.000"/>	mm
Yg	<input type="text" value="0.000"/>	mm
Zg	<input type="text" value="0.000"/>	mm

- These measurements control and adjust ACCEL and DECCEL parameters for the robot and affect cycle time and robot speed drastically. It is *very* important to have good numbers, otherwise damage to robot can occur.
- Depending on the position of the robot this data can fluctuate. The recommended posture of the robot when performing this auto calibration is second home position.



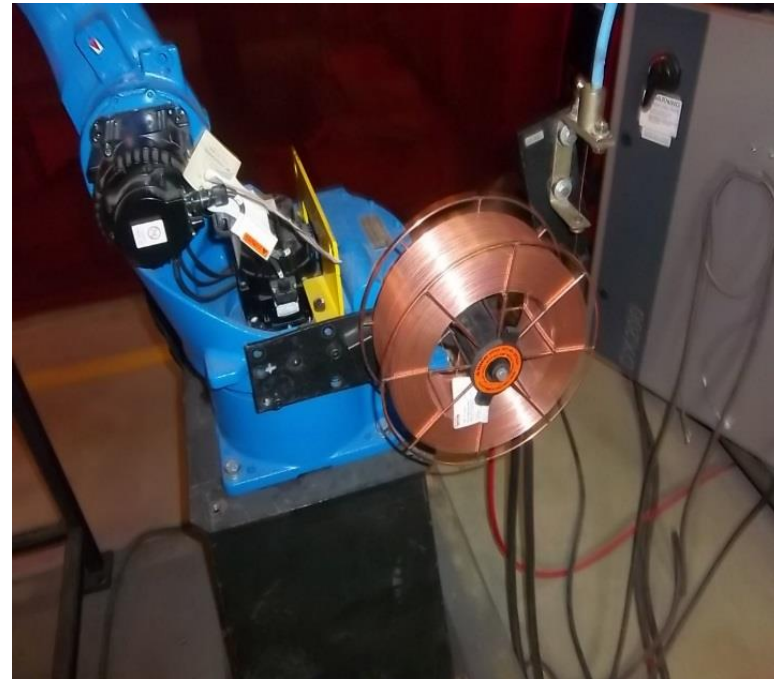
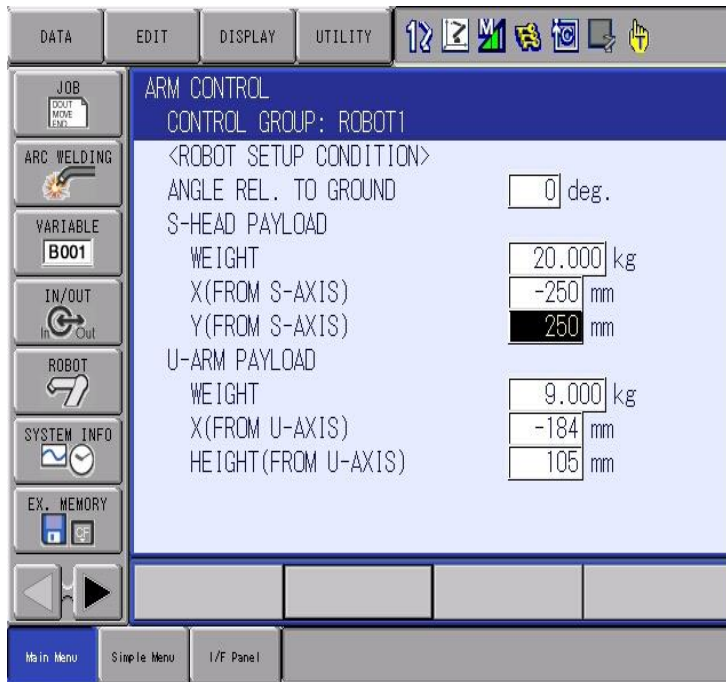
This document captures ideas, experiences, and informal recommendations from the Yaskawa Partner Support team. It is meant to augment – not supersede manuals or documentation from motoman.com. Please contact the Partner Support team at [partnersupport@motoman.com](mailto:partnersupport@motoman.com) for updates or clarification.

13. Before performing auto calibration two values will be configured within the arm control values: S-Axis Payload and U-Axis Payload.



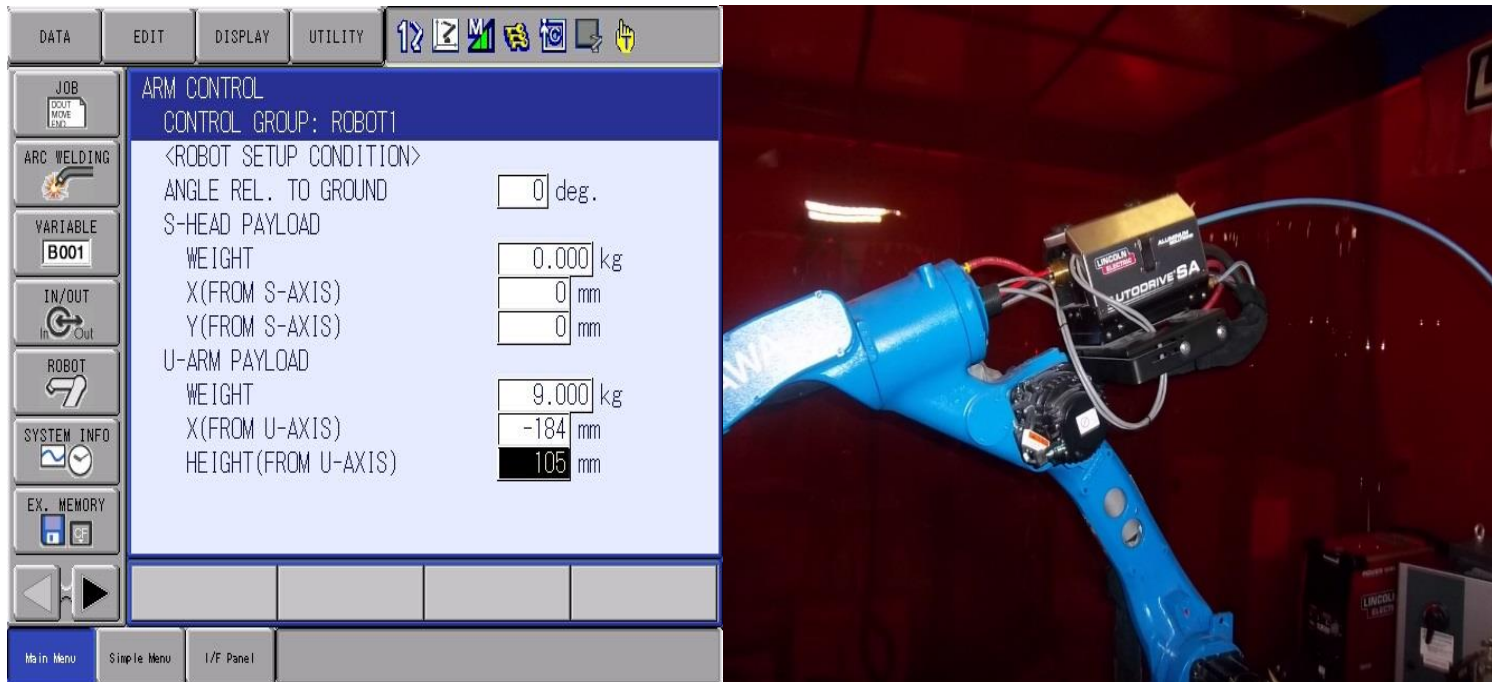
This document captures ideas, experiences, and informal recommendations from the Yaskawa Partner Support team. It is meant to augment – not supersede manuals or documentation from motoman.com. Please contact the Partner Support team at [partnersupport@motoman.com](mailto:partnersupport@motoman.com) for updates or clarification.

- S-axis Payload. If no weight is mounted here, then leave these numbers defaulted to 0.



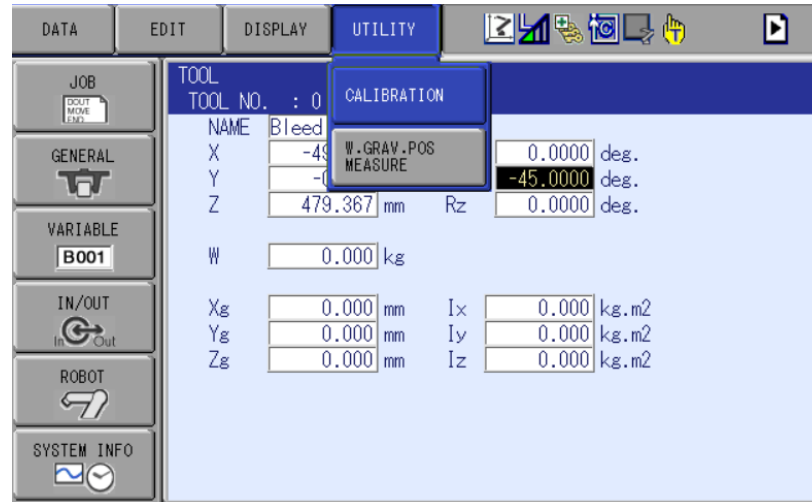
This document captures ideas, experiences, and informal recommendations from the Yaskawa Partner Support team. It is meant to augment – not supersede manuals or documentation from motoman.com. Please contact the Partner Support team at [partnersupport@motoman.com](mailto:partnersupport@motoman.com) for updates or clarification.

- U-axis payload. By default, each robot has a value already in it. Adjust this number accordingly depending what is mounted on the back of this axis.

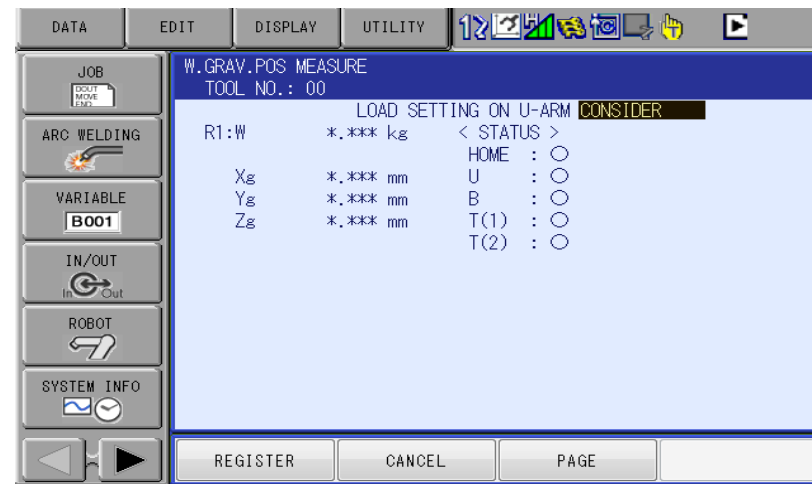


This document captures ideas, experiences, and informal recommendations from the Yaskawa Partner Support team. It is meant to augment – not supersede manuals or documentation from motoman.com. Please contact the Partner Support team at [partnersupport@motoman.com](mailto:partnersupport@motoman.com) for updates or clarification.

- Navigate back to the tool file and select UTILITY then W.GRAV.POS MEASURE

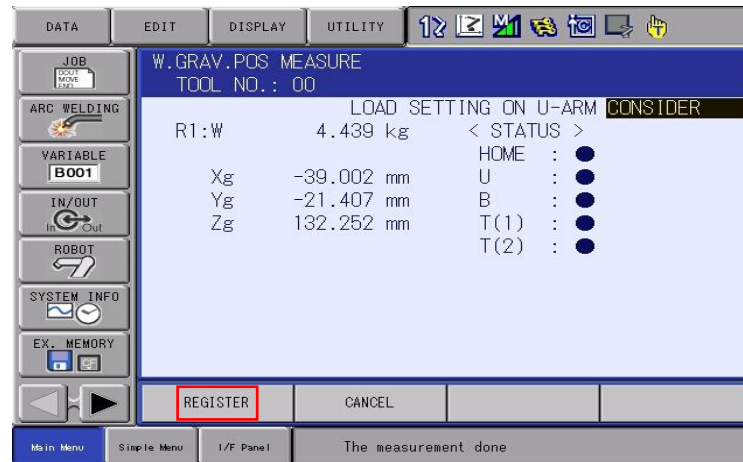


- If you have anything attached to the upper arm select CONSIDER for load setting.



This document captures ideas, experiences, and informal recommendations from the Yaskawa Partner Support team. It is meant to augment – not supersede manuals or documentation from motoman.com. Please contact the Partner Support team at [partnersupport@motoman.com](mailto:partnersupport@motoman.com) for updates or clarification.

- In teach mode, enable servos, and maintain servo power through this process. Press and hold FWD key on the teach pendant until the robot reaches its calibration home position. Depress the FWD key. Press and hold the FWD key again until the robot stops its calibration routine. Select REGISTER.



- Make sure the correct values from the calibration are within the tool file.

